



Intel® Modular Server Management Pack v1.0 Release Notes

Release Date: January, 2008

1. Supported Operating Systems

Management Server for Microsoft® System Center Essentials 2007™ (All Editions)

Windows Server® 2003 Small Business Edition operating system with SP1 (IA-32 and Intel 64 architectures)

Windows Server® 2003 R2 (with SP1 or later) operating system (IA-32 and Intel 64 architectures)

Managed node

Intel Modular Server System MFSYS25

Intel Management Module MFCMM Firmware Bundle – P 2.0.5 Version

Intel Compute Module MFS5000SI with Windows Server® Operating System only

Intel Compute Module MFS5000SI with Linux (does not support operating system integration)

Console Only for Small Network Edition and Standard Edition versions of Microsoft® System Center Essentials 2007™

Windows Server® 2003 Standard/Enterprise Edition operating system with SP1 (IA-32 and Intel 64 architectures)

Windows® XP Professional Operating System with SP2 (IA-32 and Intel 64 architectures)

Windows Vista™ Enterprise Edition Operating System (IA-32 and Intel 64 architectures)

Notes:

- Currently English is the only supported language for these Operating Systems.

2. Supported Server Platforms

- Intel Modular Server System MFSYS25
- Microsoft® System Center Essentials 2007™ server:
 - Should work in any platform with supported Operating System

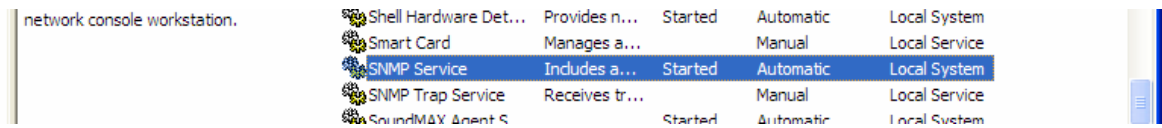
3. Installation Instructions

Installation

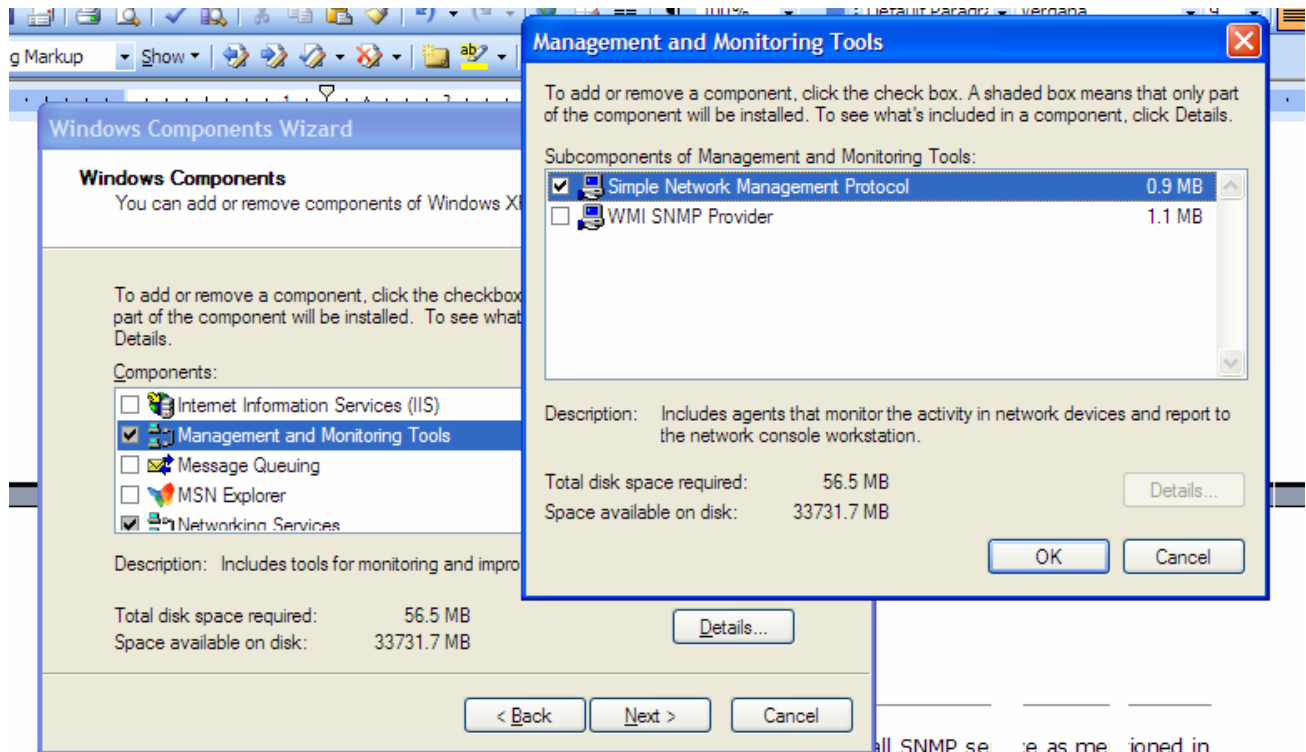
1. Before starting installation make sure following components are present in the server:

- √ Microsoft® System Center Essentials 2007™ is successfully installed on Server. Microsoft® System Center Essentials 2007™ can be installed using Intel System Management Software 2.0 Installation CDs.
- √ Windows SNMP Service and Trap Service are installed on Server.
 - Run services.msc from command window or Run window

- Look for SNMP Service and SNMP Trap Service



- If these rows are not there, you will have to install SNMP service as mentioned in the steps below. You may need windows installation disk for this.
- Open 'Add or Remove Programs' from 'Control Panel'
- Click on 'Add/Remove Windows Components' from left side bar
- Select the check-box before 'Management and Monitoring Tools'
- Open the 'Details' box below and select 'Simple Network Management Protocol' check-box

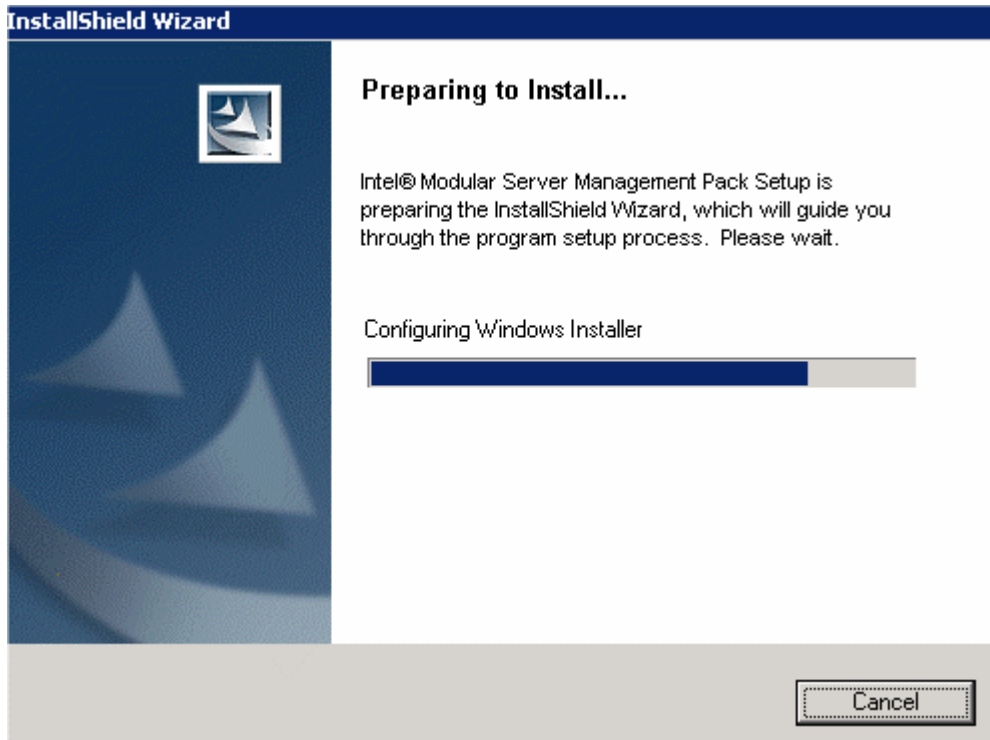


- Click on 'Next' button and install the components if the check-boxes mentioned above were unselected.

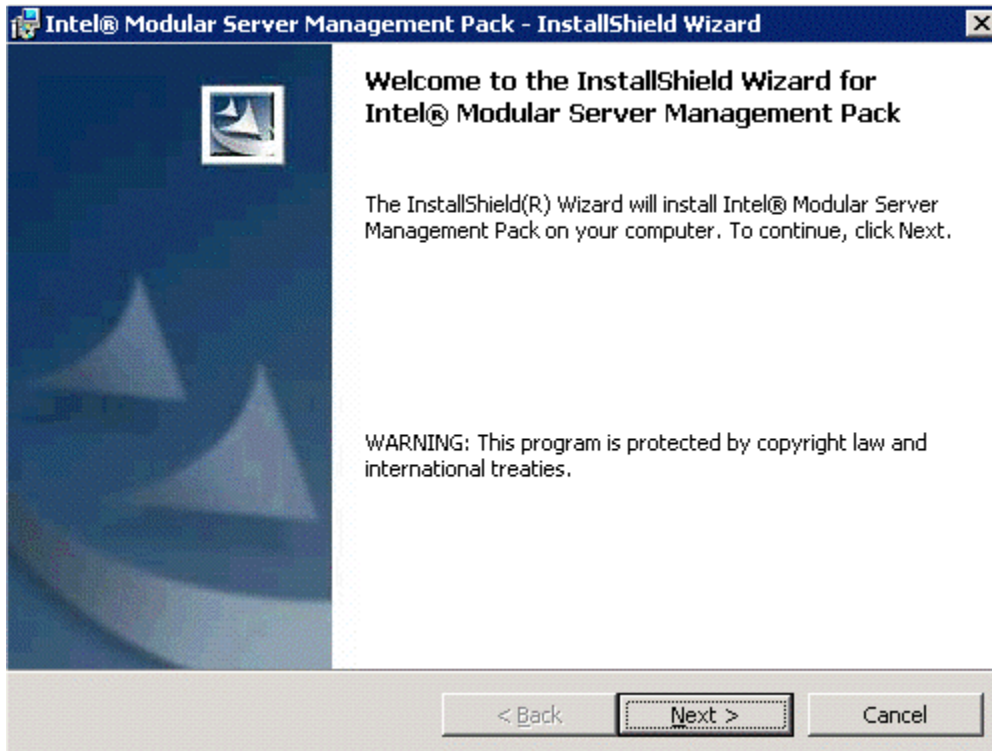
2. Close all open Microsoft® System Center Essentials 2007™ Remote Management Consoles before installation
 - If there are any open consoles the installer will give an error and will proceed only after user close the consoles.
3. Copy all the files from INSTALL directory to local directory



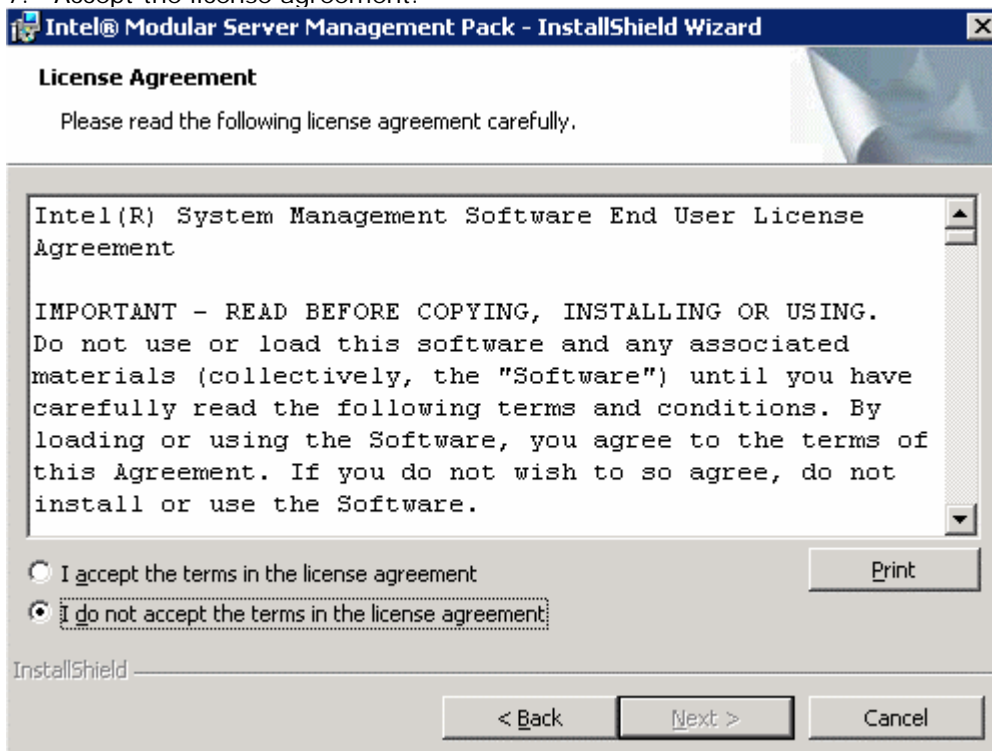
4. Launch "Intel Modular Server Management Pack x86.exe" for IA-32 architecture O/S and Intel Modular Server Management Pack x64.exe" for Intel 64 architecture O/S.
5. Screen shot of the launched Installer is shown below.



6. Click Next button to begin installation process

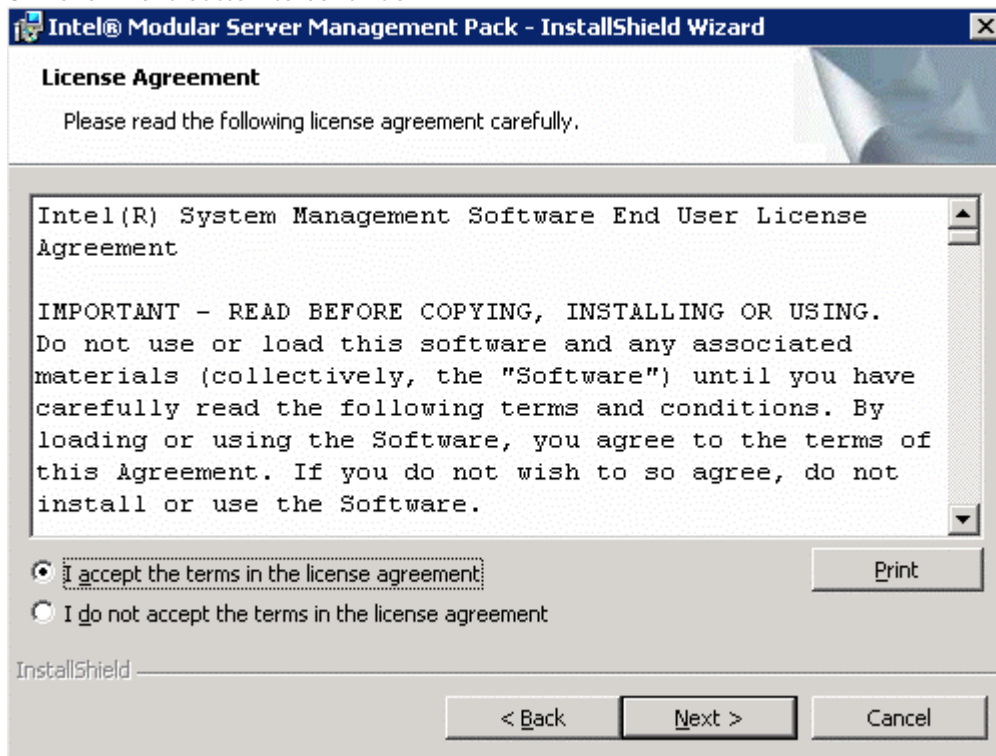


7. Accept the license agreement.

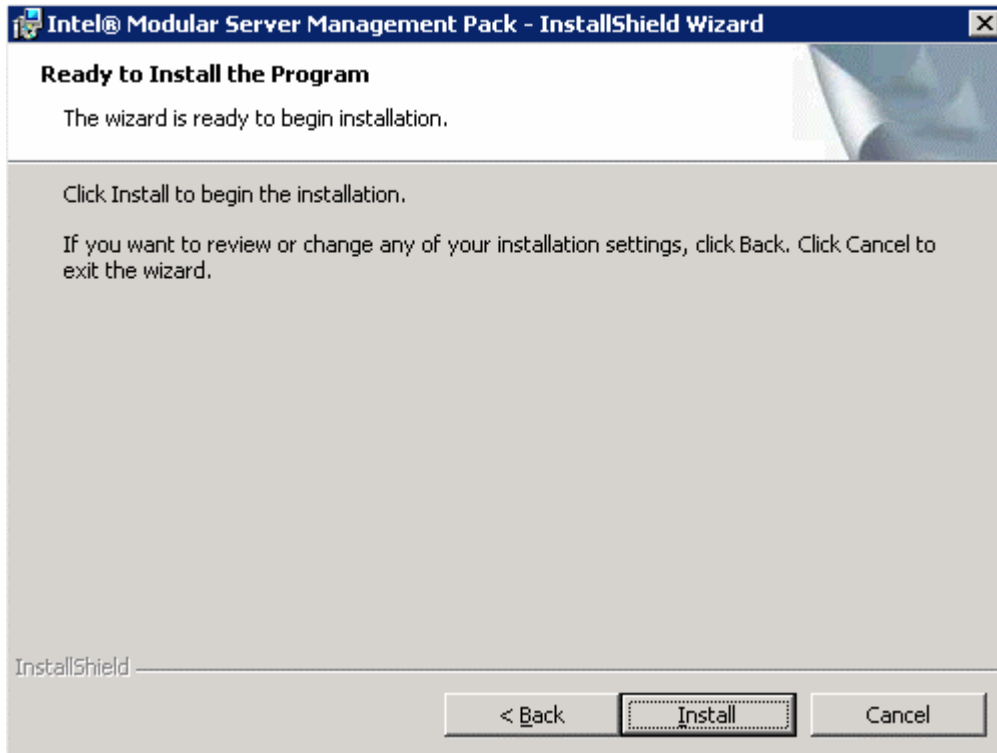




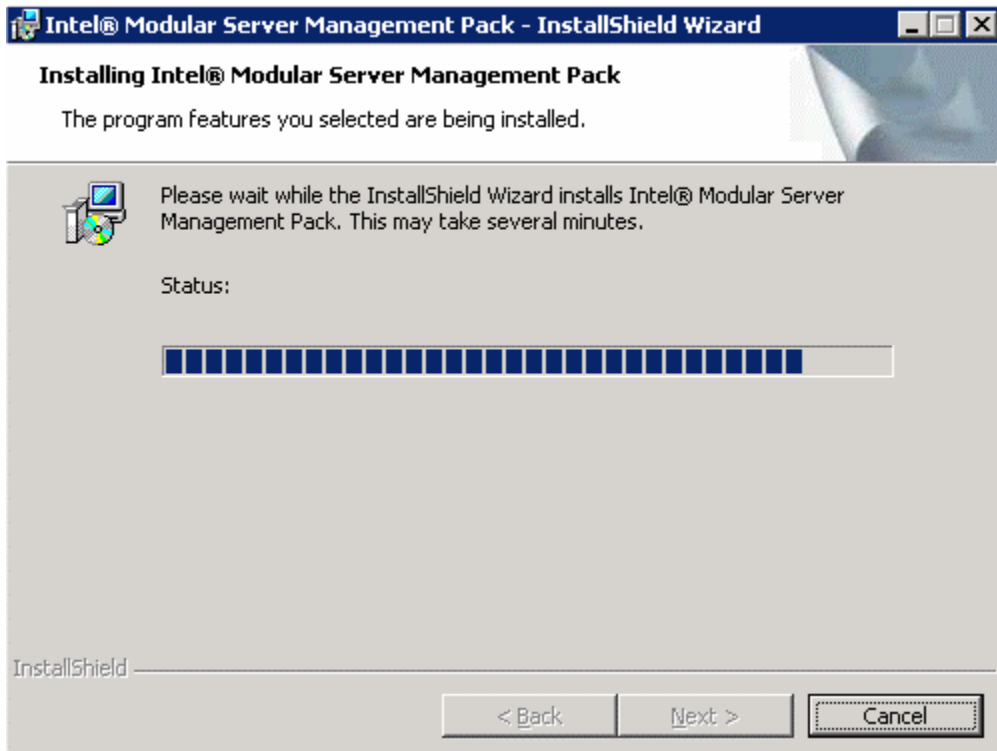
8. Click Next button to continue.



9. Click Install button to continue.

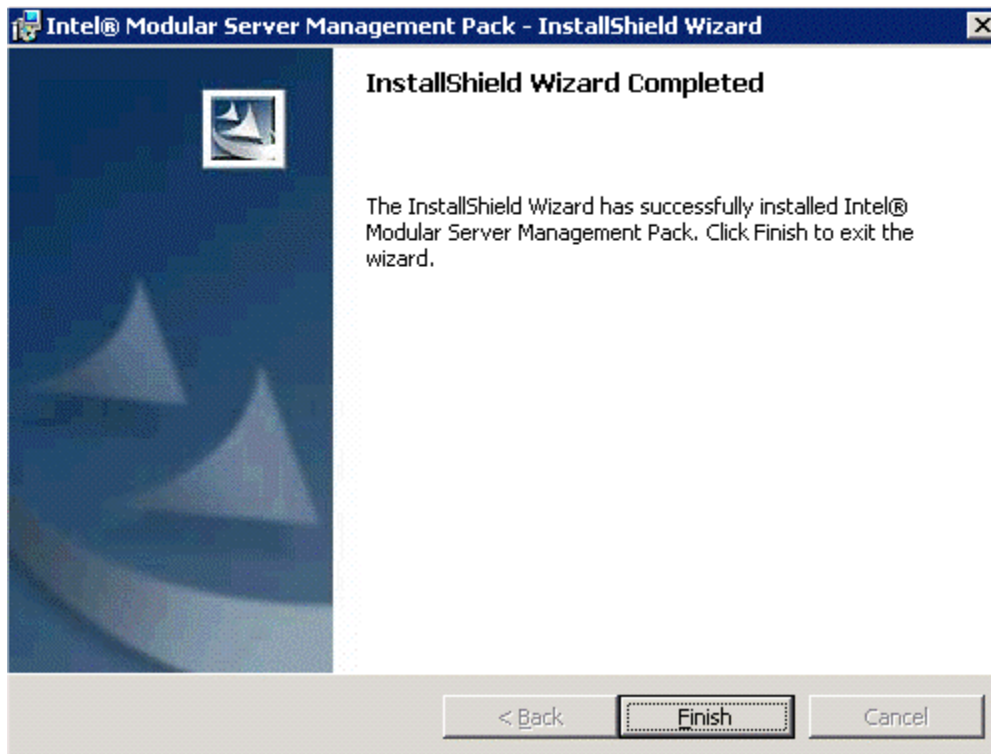


10. The Installation Progress screen is shown below.

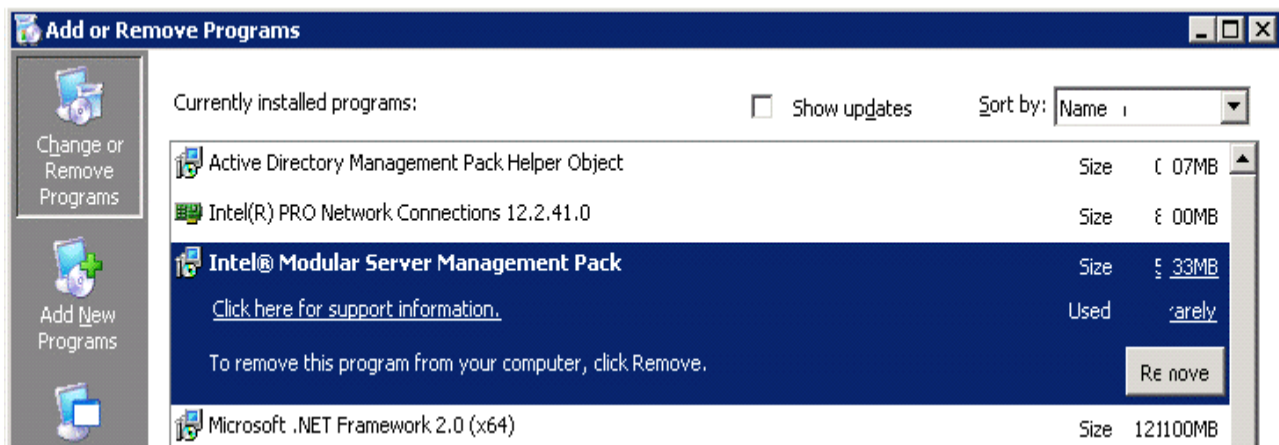




11. Click Finish button to complete installation.



12. Verify the “Add or Remove Programs” menu as shown below. It should have new entry “intel® Modular Server Management Pack” added.



13. There are few steps to do in the Modular Server chassis to discover and monitor the chassis successfully using Intel Modular Server Management Pack.

- To discover successfully the community string in the SNMP Configuration Table in Modular Server Control software should match what user supplies to Discovery Wizard.

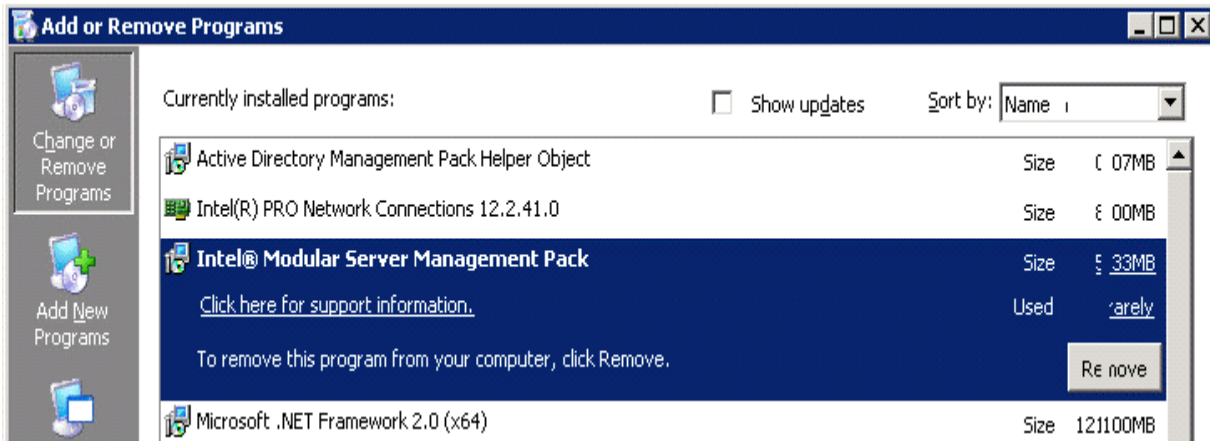


- Configure the Intel Modular Server System SNMP with the Microsoft® System Center Essentials 2007™ Server's IP Address and community string 'public'.
- The Intel Modular Server Control software has an Event Policy Table which lists all the possible events from the CMM. If the Administrator wishes to receive any of the listed events in Microsoft® System Center Essentials 2007™ console Alerts Window, he should make sure that the SNMP check-box for the corresponding Event is selected. Similarly Event generation in Essentials Alert Window can be turned off by deselecting the check-box at the Server Control Event Policy Table.

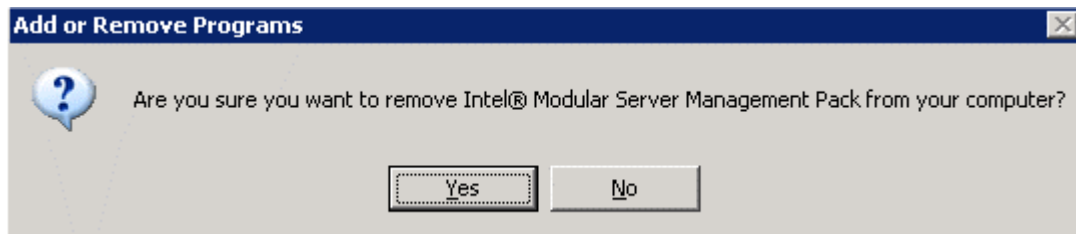
Uninstallation

Follow the steps below to uninstall the Intel Modular Server Management Pack:

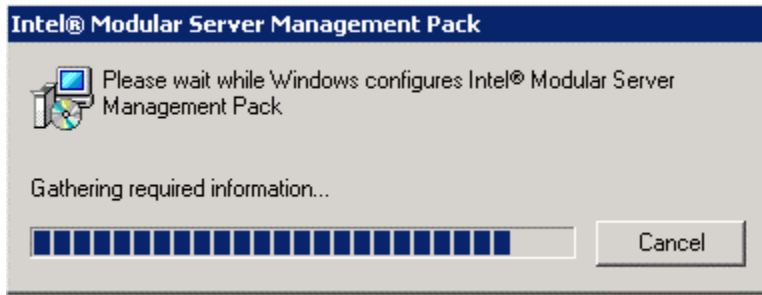
1. Open "Add or Remove Programs" menu and select "Intel® Modular Server Management Pack" and click Remove button as shown below.



2. Select Yes to continue



3. The progress dialog box is shown below.



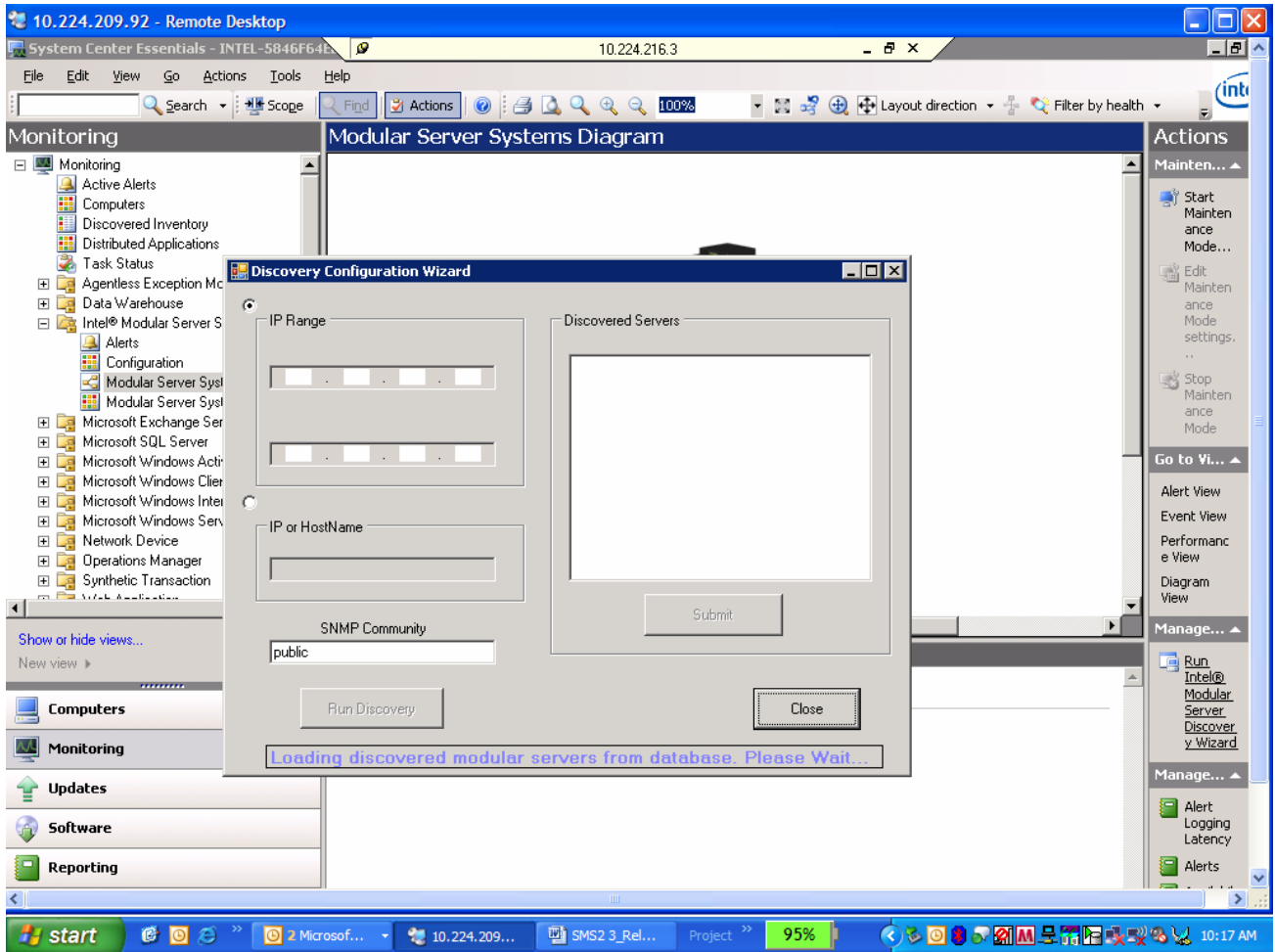
4. Verify that all the installed files are removed.

3. Notes and Known Issues

Important notes and known issues specific to each feature are listed below.

Usage:

- Once the Management pack is successfully installed, the user has to run the discovery wizard to manage the Modular Server chassis.
- An alert will be generated if the user does not give any discovery configuration.
- User can go to System Configuration folder and select the entry in Intel Modular Server Systems→Modular Server System State. Click on “Run Discovery Wizard” and supply the IP-address range or host name and give appropriate community string. It should be same as what is configured in the Intel Modular Server Control Software.



- Once user supplies the IP address range or individual IP address with valid community string, the user can click on the discover button to start the discovery.
- The discovered servers are listed in the list displayed on the right side of the wizard.
- User can select and/or de-select the server and use the submit button to add these into the database. These servers would be discovered immediately.
- The de-selected server would not be inserted into the database. If the server is already present in the database it would be removed
- The discovered servers should be visible in the State View or Diagram view within few minutes of the configuration submission. You may have to refresh the window occasionally to see the updates.

Installer

Notes:

- If the user runs the wrong installer for the current processor architecture (IA-32 or Intel 64), the installer will give error and exit.



-
- The installer will give error if the SNMP Service is not installed. If the Service is installed but not enabled, the service will be started automatically by the installer.
 - The installer will check and give an error if there is an open Microsoft® System Center Essentials 2007™ Console in the server. User can proceed with installation once the Console is closed.

Known Issues:

- Installer fails in a fresh SBS installation: unable to launch discovery task.

Scenario:

This shows up only if installed via a remote desktop connection. This is because the remote desktop window does not update the latest environment variables from the system without reconnecting again.

Work-around:

- Log off from the remote desktop session and re-login again.

Discovery

Notes:

- First, run the discovery wizard to get the list of Intel Modular Server Systems and add them in the database. The next step is to discover the chassis components and this is currently timed to run every 60 minutes. The discovery frequency can be increased by changing the interval of discovery to lower values but is not advisable since it hogs the system resources. The discovery will run immediately after configuration. However if the discovery IP range given is large, the management pack will take some time before displaying any systems found in the network.

Known issues:

- The Intel® Compute Module MFS5000SI SMBIOS data (CPU and DIMM information) will not be updated in the console until the compute module has been powered on at least once.

Health & Monitoring:

Notes:

- Currently the health monitoring of the devices do not consider alerts from the Intel® Management Module MFCMM for health. Also the frequency of the monitoring rules and discovery rules are very different. Hence the data shown in the properties window of a device may not match with the alerts or monitoring status of the device. This discrepancy, however, this is clearly indicated using *Last Updated* field in the discovery data.
- The user will have to manually close all alerts; no automatic resolution is possible for alerts from the Intel Modular Server System.



Known Issues:

- The order of alerts shown in the Alerts Window in the Microsoft® System Center Essentials 2007™ Console is different from the order in which it was received from the managed Intel Modular Server System. This is because the Microsoft® System Center Essentials 2007™ console read a group of alerts in every 30 secs and process them in an independent order among them. Hence the order among these alerts will be different. The user can, however, see the order based on the Event Id which is captured in the Alerts description.

Microsoft® System Center Essentials 2007™ Console**Known Issues:**

1. Sometimes there is a mismatch between what is shown in the Console and what is discovered and added to SQL database. You may have to press the refresh (F5) button continuously to see the latest data. This is true for alerts, diagram and state view.
2. The diagram view or state view of the chassis do not always show correct health state. The health state of the overall chassis may appear as healthy even when the lower layers show unhealthy state. However, in such cases it was observed that the health explorer of the chassis would always show the correct health rollup.

5. Legal Notices

INFORMATION IN THIS DOCUMENT IS PROVIDED IN CONNECTION WITH INTEL® PRODUCTS FOR THE PURPOSE OF SUPPORTING INTEL DEVELOPED SERVER BOARDS AND SYSTEMS. NO LICENSE, EXPRESS OR IMPLIED, BY ESTOPPEL OR OTHERWISE, TO ANY INTELLECTUAL PROPERTY RIGHTS IS GRANTED BY THIS DOCUMENT. EXCEPT AS PROVIDED IN INTEL'S TERMS AND CONDITIONS OF SALE FOR SUCH PRODUCTS, INTEL ASSUMES NO LIABILITY WHATSOEVER, AND INTEL DISCLAIMS ANY EXPRESS OR IMPLIED WARRANTY, RELATING TO SALE AND/OR USE OF INTEL PRODUCTS INCLUDING LIABILITY OR WARRANTIES RELATING TO FITNESS FOR A PARTICULAR PURPOSE, MERCHANTABILITY, OR INFRINGEMENT OF ANY PATENT, COPYRIGHT OR OTHER INTELLECTUAL PROPERTY RIGHT.

UNLESS OTHERWISE AGREED IN WRITING BY INTEL, THE INTEL PRODUCTS ARE NOT DESIGNED NOR INTENDED FOR ANY APPLICATION IN WHICH THE FAILURE OF THE INTEL PRODUCT COULD CREATE A SITUATION WHERE PERSONAL INJURY OR DEATH MAY OCCUR.

Intel may make changes to specifications and product descriptions at any time, without notice. Designers must not rely on the absence or characteristics of any features or instructions marked "reserved" or "undefined." Intel reserves these for future definition and shall have no responsibility whatsoever for conflicts or incompatibilities arising from future changes to them. The information here is subject to change without notice. Do not finalize a design with this information.

The products described in this document may contain design defects or errors known as errata which may cause the product to deviate from published specifications. Current characterized errata are available on request.

Contact your local Intel sales office or your distributor to obtain the latest specifications and before placing your product order.

Intel is a trademarks of Intel Corporation in the U.S. and other countries.

Microsoft, Windows, Windows Server, Windows Vista, and System Center Essentials 2007 are trademarks, or registered trademarks of Microsoft Corporation in the United States and/or other countries.

* Other names and brands may be claimed as the property of others.

Copyright © 2007 Intel Corporation. All rights reserved.